



## Green Master Plan – Amaravati Capital City

“Create a clean, healthy vibrant city with well *protected environment* which supports a *sustainable society* and economy.”



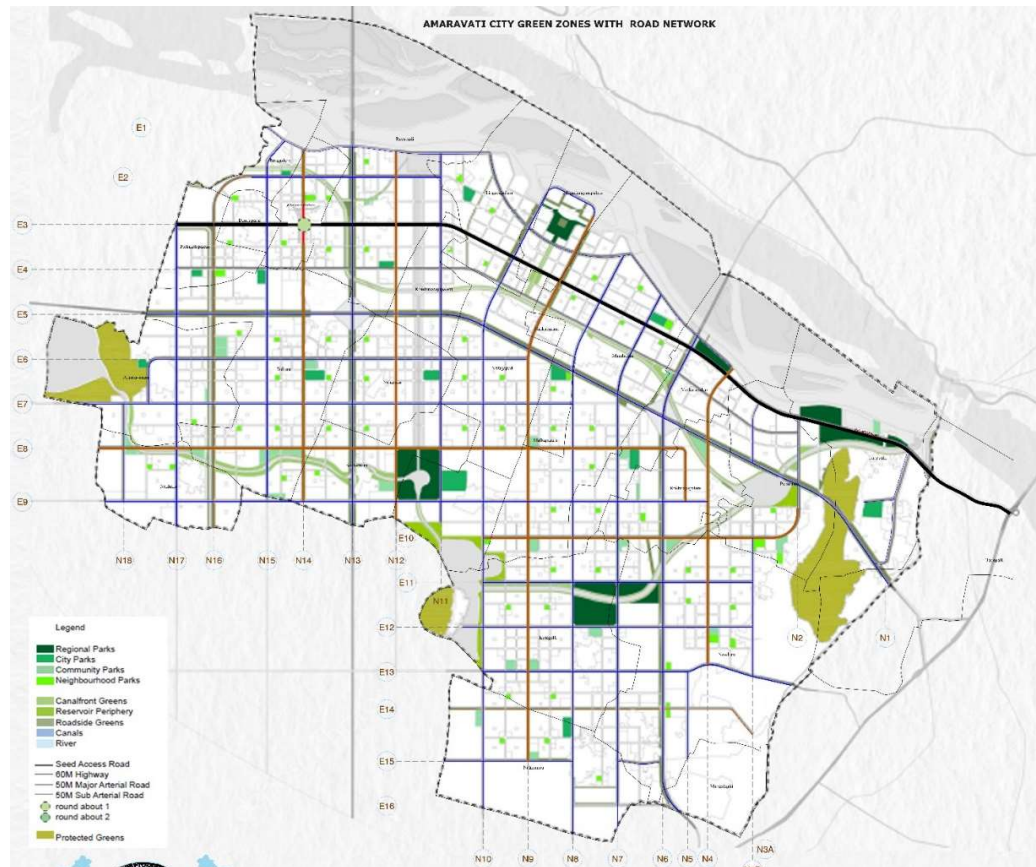
**A D C**  
Amaravati Development  
Corporation Limited

# Amaravati Greening Development Project

Around  
53,622 acres  
of Amaravati  
Capital City

15,990 acres  
of green and  
protected  
areas (30%  
of ACC)

Three Green  
Zones and  
Multiple  
Typologies of  
green spaces



The Green master-plan involving development of various green components like: Road green buffers and rotaries, waterfronts along canal, reservoirs and river, hills and parks is already in place.

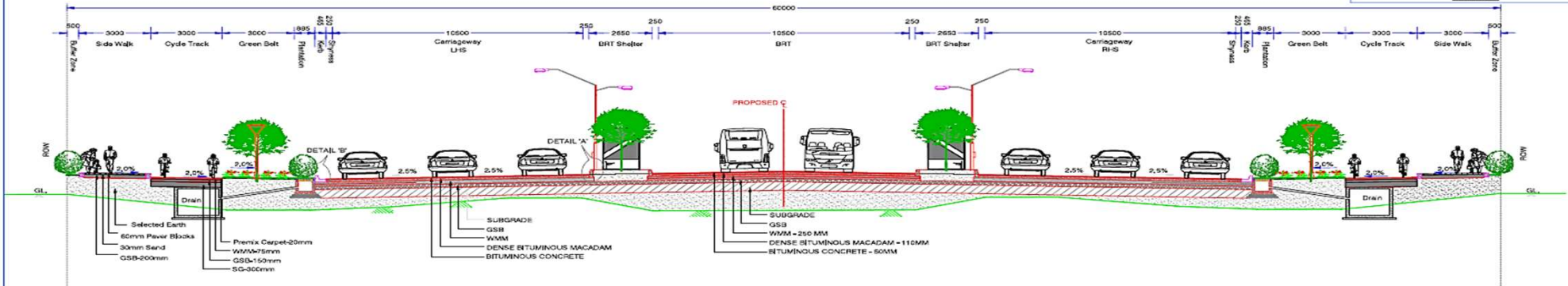
# Request for Proposal (RPF) for (i) Avenue Plantation with Beautification and (ii) Median and Junction plantation with beautification in Trunk Roads in Amaravati

## Green buffer along the roads

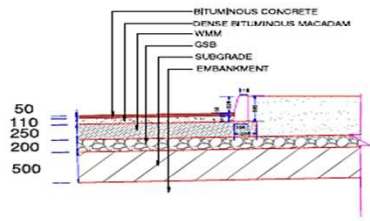
Details of Road Length & Green Buffer						
S.NO (1)	Name of the Road (2)	Length in KM (3)	Green Buffer (4)		Total Length in Kms	Central Median Length
			Left side length in Km	Right side length in Km		
1	E1	13.72	4.6	-	4.6	27.44
2	E2	4.440	0.47	-	0.47	8.88
3	E3	18.270	12.110	-	12.110	36.54
4	E4	15.560	No buffer			31.12
5	E5	19.46	14.12	14.12	28.24	38.92
6	E6	9.845	5.520		5.520	19.69
7	E7	11.570	1.770		1.770	23.14
8	E8	14.950	5.090		5.090	29.9
9	E9	14.120	No buffer			28.24
10	E10	7.810	4.020		4.020	15.62
11	E11	6.310	No buffer			12.62
12	E12	6.791	4.110		4.110	13.582
13	E13	7.33	1.3	1.3	2.6	14.66
14	E14	7.360	3.990		4.000	14.72
15	E15	4.07	0.9	-	0.9	8.14
16	E16	4.465	-	0.86	0.86	8.93

## Green buffer along the roads

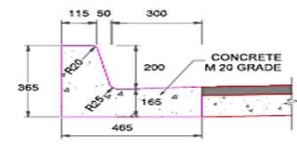
17	N1	3.68		No buffer		7.36
18	N2	2.3		No buffer		4.6
19	N3A	1.452		No buffer		2.904
20	N3B	3.258		No buffer		6.516
21	N4	7.170	5.280	-	5.280	14.34
22	N5	3.34		No buffer		6.68
23	N6	13.1	8.5	-	8.5	26.2
24	N7	12.742	8.420		8.420	25.484
25	N8	13.860	1.850	-	1.850	27.72
26	N9	13.160	8.700	-	8.700	26.32
27	N10	16.310	0.000	1.060	1.060	32.62
28	N11	8.657	0.160	-	0.160	17.314
29	N12	8.633		No buffer		17.266
30	N13	11.900	7.000	7.000	14.000	23.8
31	N14	8.270	5.460		5.460	16.54
32	N15	8.514	-	-		17.028
33	N16	8.770	5.590		5.590	17.54
34	N17	7.078		No buffer		14.156
35	N18	3.45		No buffer		6.9
<b>Total</b>		<b>321.715</b>	<b>108.96</b>	<b>24.340</b>		<b>643.43</b>



TYPICAL 6 LANE CROSS SECTION WITH BRT (60m ROW)



DETAIL-A



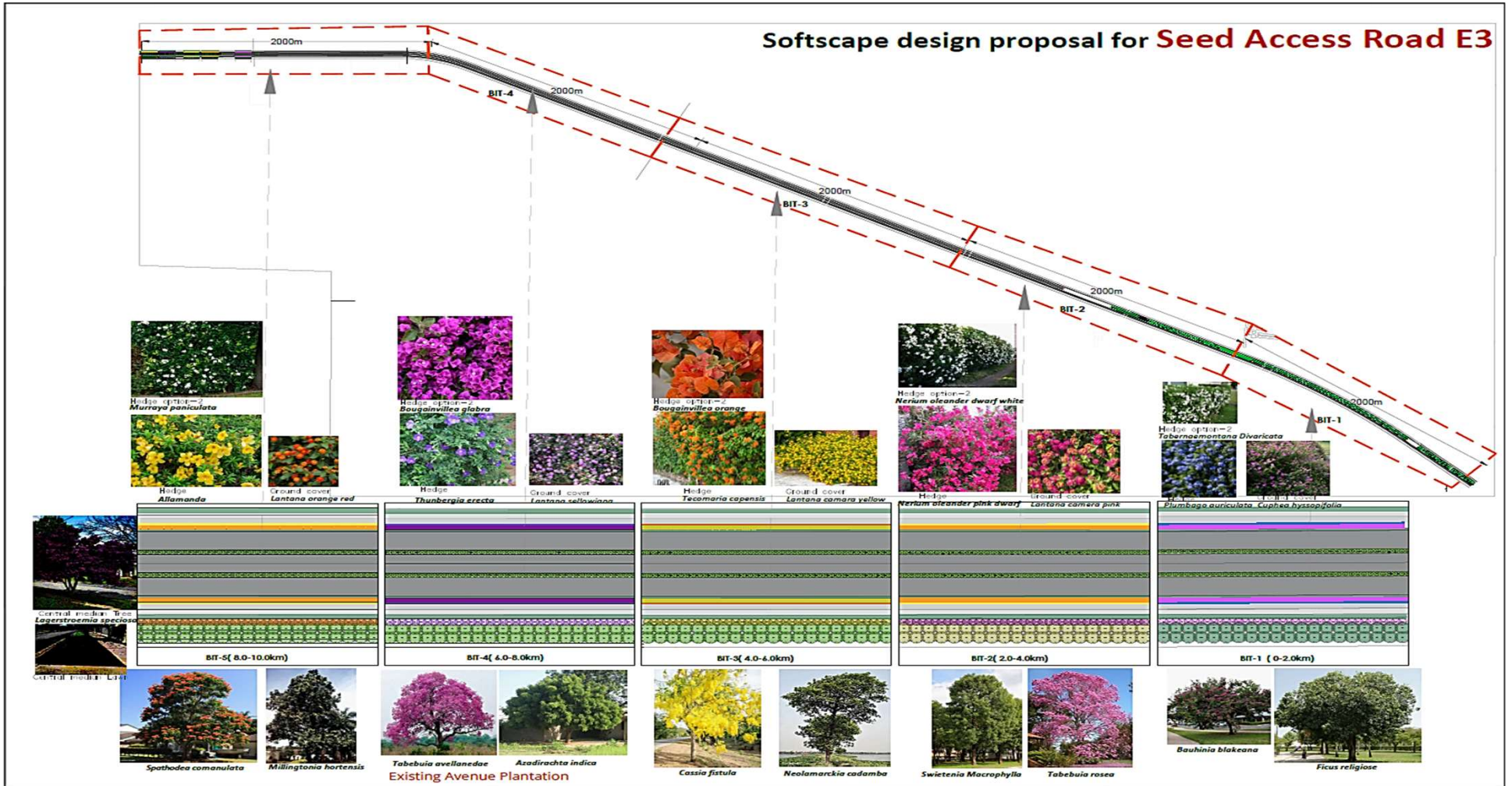
KERR CHANNEL  
DETAIL-B

ISSUED FOR TENDER

<p><b>DPH Consultant:</b>  <b>aarvee associates</b>          architects engineers &amp; consultants pvt. ltd.          Ravula Residency, Snagar Colony Main Rd.,          Hyderabad-42, India Tel: +91-40-23757833,          Fax: +91-40-23736277          e-mail: water@aarvee.net;          web: www.aarvee.net</p>	<p><b>Project:</b>          CONSULTANCY SERVICES FOR PREPARATION OF DPR FOR (A) ASSESSMENT OF THE STATUS OF THE IMPLEMENTED WORKS (B) PREPARATION OF BOQS AND COST ESTIMATION FOR TOTAL REMAINING WORKS (C) PREPARATION OF TENDER DOCUMENTS FOR TRUNK INFRASTRUCTURE, FLOOD MITIGATION WORKS ETC., (D) CALLING FOR TENDERS AND ASSISTANCE IN TENDER EVALUATION IN AMARAVATI CAPITAL CITY OF ANDHRA PRADESH, INDIA.</p>	<p><b>Client:</b>    <b>Amaravati Development Corporation Ltd. (ADCL)</b></p>	<p><b>Scale:</b>          NOT TO SCALE</p>	<p><b>Drawn:</b> K. Jagan  <b>Checked:</b> R. Prasad  <b>Approved:</b> [Signature]  <b>Date:</b> DEC-2024</p>	<p><b>Work:</b> WB AND ADB FINANCED AMARAVATI CAPITAL CITY DEVELOPMENT PROGRAM - PACKAGE XXVb "CONSTRUCTION OF BALANCE SMART TRUNK INFRASTRUCTURE WITH ROADS, STORM WATER DRAINS, WATER SUPPLY NETWORK, SEWERAGE NETWORK, UTILITY DUCTS FOR POWER &amp; ICT, REUSE WATER LINE, FOOTSTRAIK TRACKS, CYCLE TRACK, AVENUE PLANTATION &amp; STREET FURNITURE ETC. IN E3 ROAD (FROM Ch:0+000 TO Ch:14+350 Km) ON LUMP SUM BASIS (PERCENTAGE CONTRACT) IN AMARAVATI, ANDHRA PRADESH."</p> <p><b>Drawing Title:</b> TYPICAL CROSS SECTION - ROAD E3</p> <p><b>Drawing No:</b> AA / Z37 / ADCL / E3 / TCS / 01</p> <p><b>Size:</b> A2  <b>Rev:</b> R0</p>
---	--	--	--	---	--



# Softscape design proposal for Seed Access Road E3





Preview has been updated.



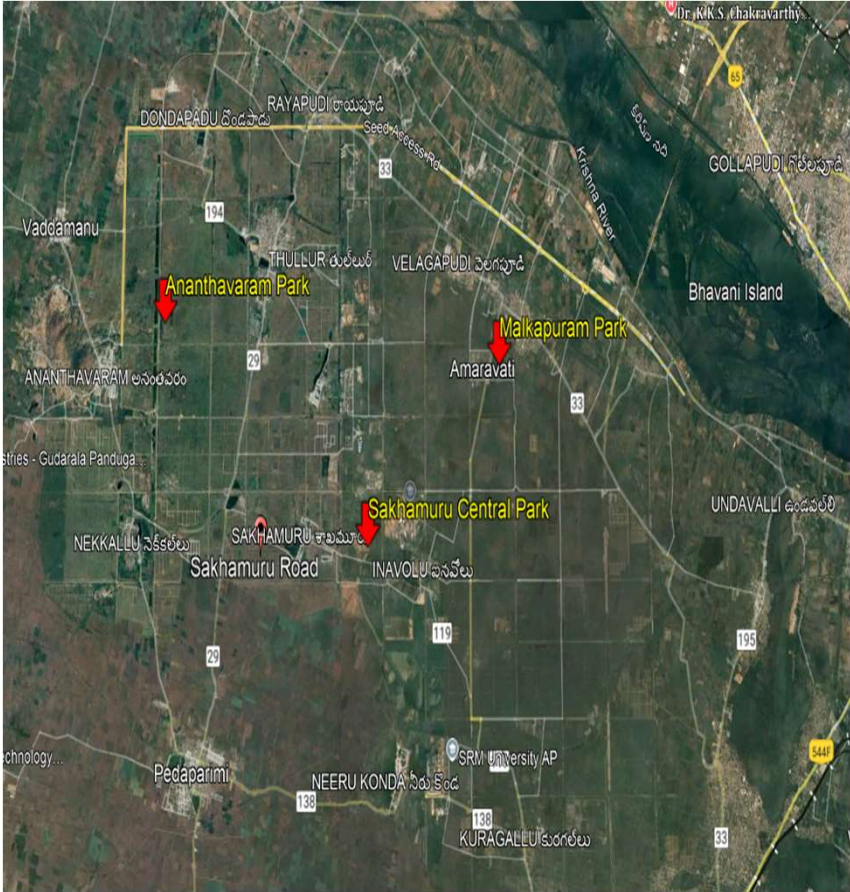
**ADC**  
Amaravati Development  
Corporation Limited

# Request for Proposal (RPF) for Development of parks with Landscape and Plantation in Amaravati



## Beautification of Sakhamuru and Regional Parks

S.No	Name of the Park	Area in Acres
1	Sakhamuru Park	190
2	Malkapuram Park	21
3	Ananthavaram Park	35
	<b>Total</b>	<b>246</b>

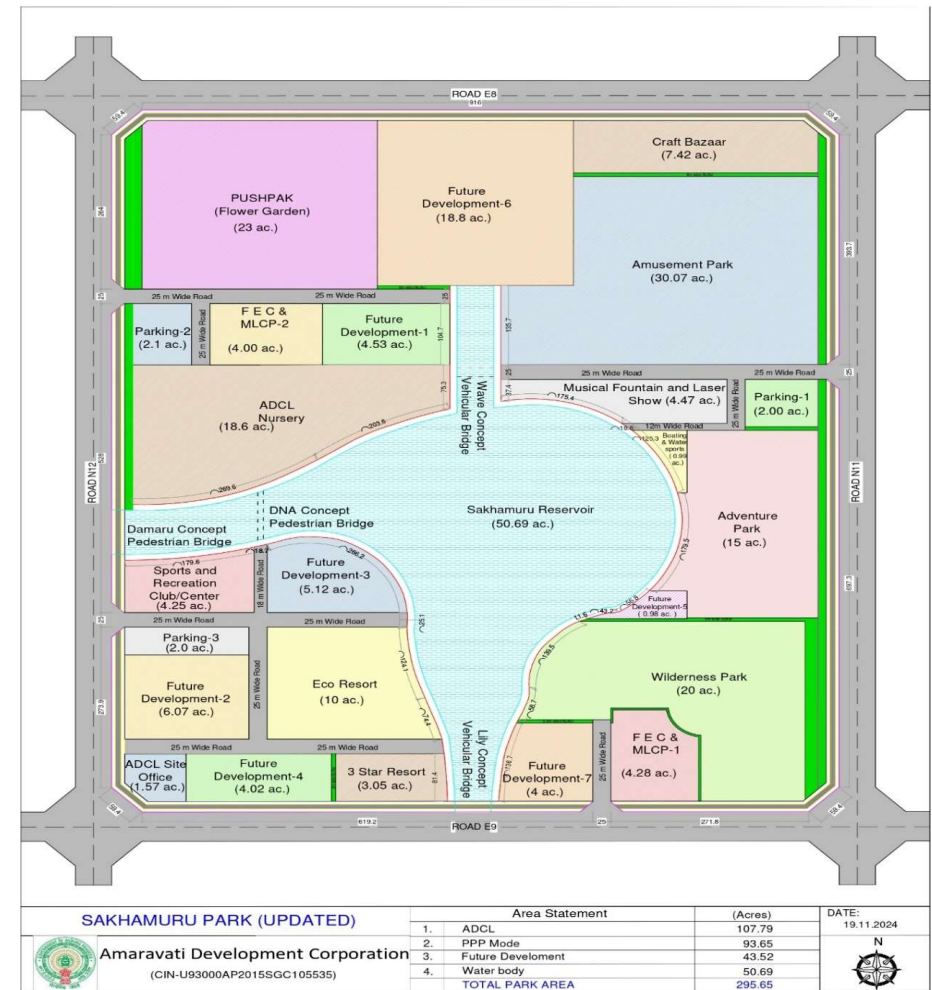


# Sakhamuru Park

Sakhamuru Park, a **190-acre** regional park at the capital's core, features a 4.4 km walkway, avenue plantation, and diverse facilities. Surrounded by educational institutions, it serves as a vital green space and city attraction

## ➤ Proposed Projects

1. Flower Garden
2. Craft Bazar
3. Musical Fountain and Laser Show
4. Nursery for Flower garden
5. Wilderness Park
6. Amusement & Entertainment Park
7. Children's Adventure Park
8. An Eco-Resort
9. Boating & Water Sports
10. Sports & Recreation Club
11. Three Star Resort
12. Toy Train in Rose Garden
13. Family Entertainment Center (FEC)-1
14. Family Entertainment Center (FEC)-2



# Ananthavaram Park

Ananthavaram Park spans 35 acres with themed attractions, pathways, and amenities.

## The proposed amenities and attractions

- 1.Administration
- 2.Parking
- 3.Central Park
- 4.Ancient India Theme Park
- 5.Multipurpose Amphitheatre
- 6.Children Theme Park
- 7.Nature Trails and Adventure Park
- 8.Family Amusement & Entertainment Park
- 9.Cultural Food Arena
- 10.Fitness and Leisure Activities for Local Community



## Malkapuram Park

The 21-acre park, adjacent to the Interim Government Complex and accessible via arterial roads, was initially envisioned as a formal space with stately avenues, open congregation areas, and recreational zones.

Essential public amenities, entry plazas, and buffer plantations for environmental enhancement.

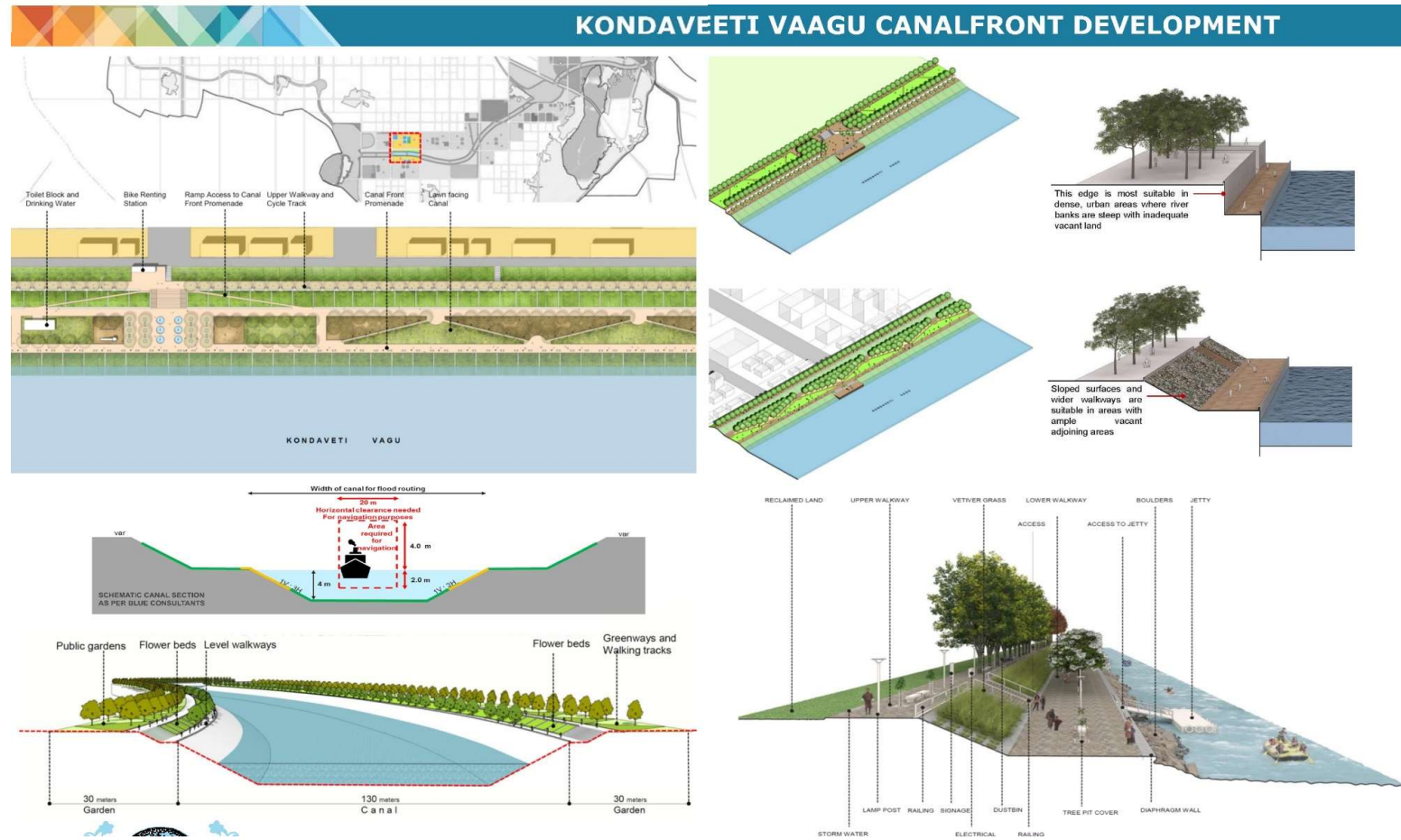
1. Entry Plaza
2. Parking
3. Amphitheatre
4. Food Court
5. Central Plaza
6. Outdoor gym area
7. Children's Play Zone
8. Skating Ring
9. Sports Field Area
10. Bio-toilets



# Request for Proposal (RPF) for Beautification of (i) Reservoirs and (ii) Canals and Vaagus with Buffers in Amaravati

# GREEN BUFFER ALONG KONDAVEETI VAAGU, PALA VAAGU & Gravity Canal

- Palavagu Vaagu Canal spreads for a length of 16.7 km with width ranging from 20 – 30 mtrs .
- The proposed KV Canal section is ranging from 120M to 170 M in width with 20m - 30m wide green buffer with a length of 23.6 Km on both sides.
- Gravity canal with a length of approximately 8 km is proposed
- This would amount to an area of about 815 acres for Canal Front Landscape Development.



## Typical Sectional Details of Vagus and canals

Section	Approx. Length (km)	Bottom Width of Canal (m)	Top Width of Canal (m)	Green Width on each Side (m)	Top Width of Green Buffer (m)	Navigable (Yes/No)
<b>Kondaveeti Vagu (23.6 Km)</b>						
Ananthavaram to Sakhamuru	9.0	10/15	30/55	20	105	No
Sakhamuru to Neerukonda	3.6	14	65	20	105	No
Nerukonda to Krishnayapalem	7.2	75	115	30	175	Yes
Krishnayapalem to Undavalli	3.8	75	115	30	175	Yes
<b>Pala Vagu(16.7 Km)</b>						
Donapadu to Secretariat	7.4	12	45	30	105	No
Secretariat to Krishnayapalem	9.3	25	65	20	105	Yes
<b>Gravity Canal(8 Km)</b>						
Vykuntapuram gravity canal	8.0	40	70	20	110	No
Total Length (Km)	48.3					

# Neerukonda Reservoir

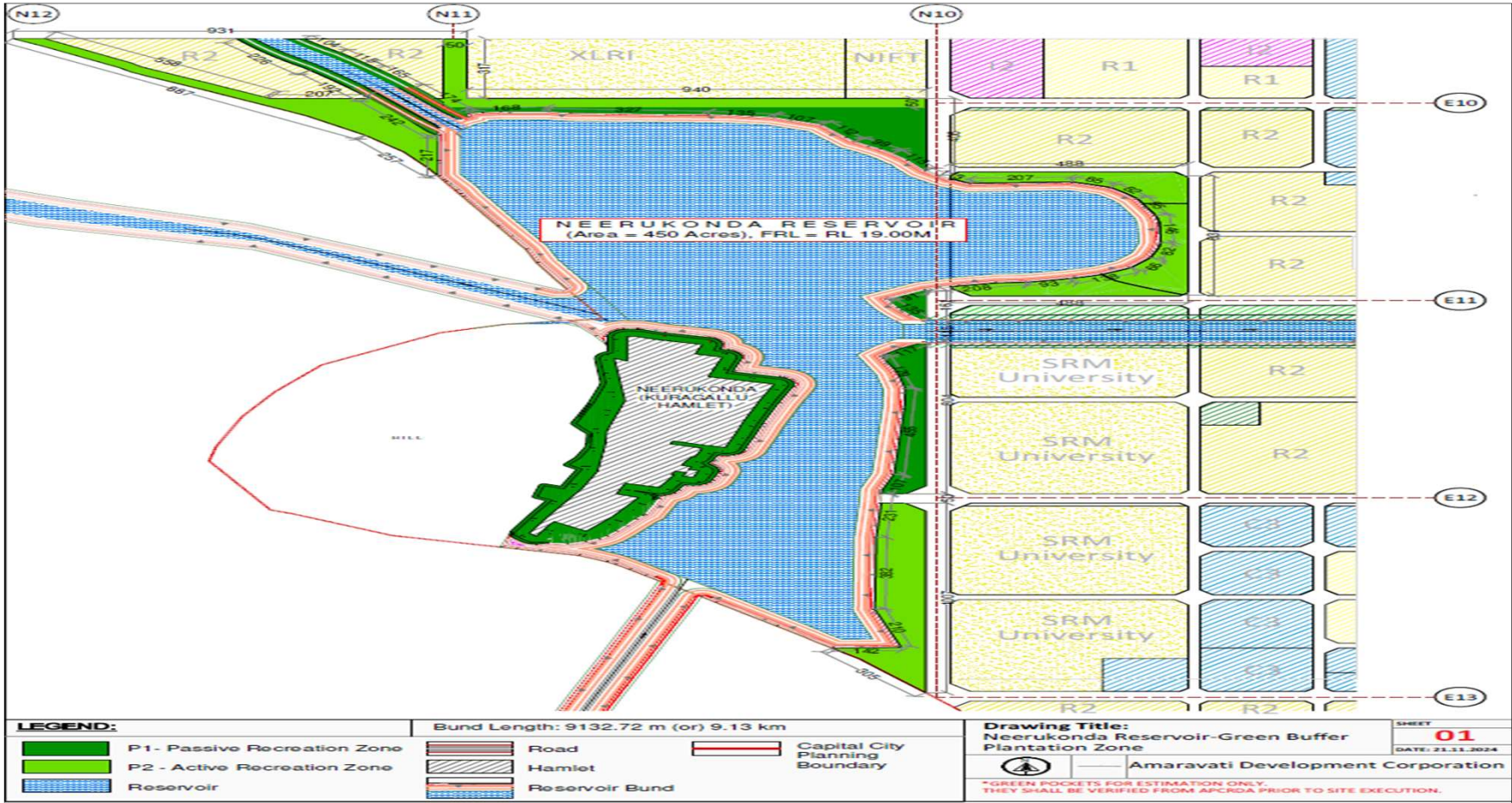
Neerukonda Reservoir  
Green Buffer Area

NEERUKONDA RESERVOIR GREEN BUFFER ZONE			
ROAD JUNCTIONS	PERIMETER(m)	WIDTH (m)	BUFFER AREA (sq.m.)
<b>P1 (Passive Recreation Zone)</b>			
N-12 TO N-11	2612.63	30	34927.3
N-11 TO N-10	2379	30-356	70139.34
JUNC N 10 - E 11	387	76	6772.04
E 11 TO E 12	1712	42-90	45298.2
KURAGALLU HAMLET	3019.3	41-84	136139
<b>TOTAL P1 AREA</b>			<b>293275.88</b>
<b>P2 (Active Recreation Zone)</b>			
N-12 TO N-11	3268	50-158	90881.5
N-11 TO N-10	1980	50	47000
E 10 TO E 11	3012	57-488	114131.5
E 12 TO E 13	2367	50-192	93736.25
<b>TOTAL P2 AREA</b>			<b>345749.25</b>
<b>Total Green Buffer Area</b>		<b>sq.m.</b>	<b>639025.13</b>
<b>Nearly,</b>		<b>Acres</b>	<b>158</b>

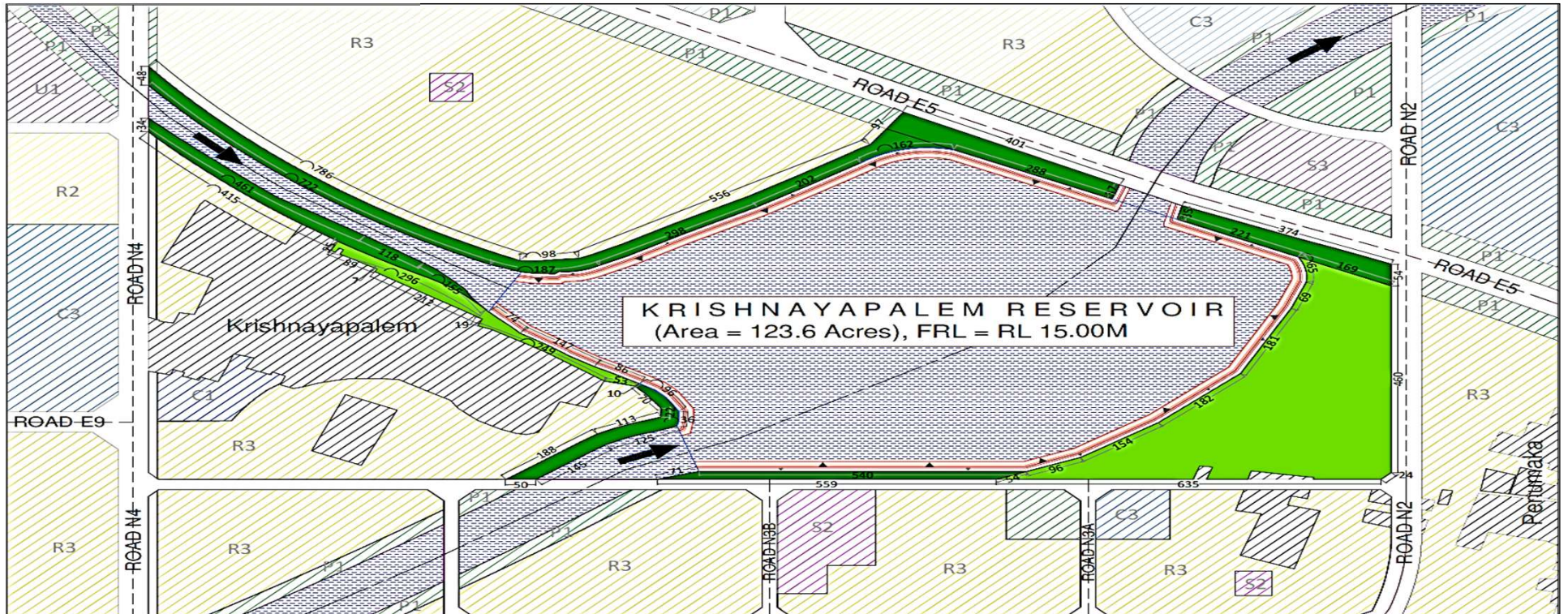
BUND LENGTH - (m)	BUND ROAD WIDTH (m)	ROAD AREA (sq.m.)
9132.72	6	54796.32

TOTAL P1 AREA	72.5
TOTAL P2 AREA	85.4
WATERBODY AREA	450.0
BUND ROAD AREA	13.5
<b>Total Reservoir Area</b>	<b>Acres 621.4</b>

# Neerukonda Reservoir



# Krishnayapalem Reservoir



**KRISHNAYAPALEM RESERVOIR**  
(Area = 123.6 Acres), FRL = RL 15.00M

<b>LEGEND:</b>		Bund Length: 3136.97 m (or) 3.13 km		<b>Drawing Title:</b> Krishnayapalem Reservoir-Green Buffer Plantation Zone		SHEET <b>01</b> DATE: 22.11.2024	
	P1- Passive Recreation Zone		Bund Road		Capital City Planning Boundary	Amaravati Development Corporation	
	P2 - Active Recreation Zone		Reservoir Bund		Existing Village		
	Reservoir			*GREEN POCKETS FOR ESTIMATION ONLY. THEY SHALL BE VERIFIED FROM APCRDA PRIOR TO SITE EXECUTION.			

# Krishnayapalem Reservoir

Krishnayapalem Reservoir  
Green Buffer Area

KRISHNAYAPALEM RESERVOIR GREEN BUFFER ZONE			
ROAD JUNCTIONS	PERIMETER(m)	WIDTH (m)	BUFFER AREA (sq.m.)
<b>P1 (Passive Recreation Zone)</b>			
PALA VAGU CANAL SOUTH SIDE	1479	14-27	19784.6
PALA VAGU CANAL NORTH SIDE TO E5	3882	30-45	64611.4
NEAR JUNC E5 - N12	853	35-54	15846.6
N3A - N3B	1224	20	10788.4
EAST OF KRISHNAYAPALEM VILLAGE	833	10 31	10922.6
<b>TOTAL P1 AREA</b>			<b>121953.6</b>
<b>P2 (Active Recreation Zone)</b>			
BESIDE KRISHNAYAPALEM VILLAGE	1267	10 35	14843.3
RESERVOIR EAST SIDE (N2)	2089	169-345	152484.5
<b>TOTAL P2 AREA</b>			<b>167327.8</b>
<b>Total Green Buffer Area</b>		<b>sq.m.</b>	<b>289281.4</b>
<b>Nearly,</b>		<b>Acres</b>	<b>71</b>

BUND LENGTH - (m)	BUND ROAD (m)	WIDTH	ROAD AREA (sq.m.)
3136.97	3		9410.91

TOTAL P1 AREA	30.1
TOTAL P2 AREA	41.3
WATERBODY AREA	123.6
BUND ROAD AREA	2.3
<b>Total Reservoir Area</b>	<b>Acres 197.4</b>

# Request for Proposal (RPF) for Riverfront Development in Amaravati

# KRISHNA RIVERFRONT DEVELOPMENT

GREENING DEVELOPMENT ALONG KRISHNA RIVER FOR 25 KMS with 100 mtrs width

1. Riverfront Trails
2. Riverfront Promenades
3. Riverfront Streets
4. Scenic Drives
5. Biodiversity Parks
6. River Markets
7. Theme Parks
8. River Museums



THANK YOU

